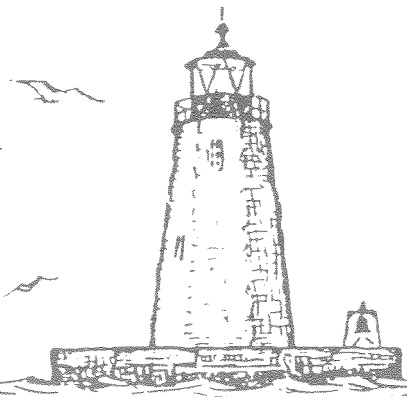


*The*  
GREEN

LIGHT



BULLETIN OF THE POINT ASSOCIATION  
OF NEWPORT, RHODE ISLAND

---

WINTER 1995-96





The

# GREEN LIGHT

XXXX No. 4

WINTER 1995-96

## FEATURES

President's Letter	3
Point Association News	4-7
Adventure Club	8
40th Anniversary	9
The Great Christmas Explosion	10&11
Gladys Bolhouse	11
History on Post Cards	12
Holiday Happenings	13
Laurice Shaw	14
Gardening	15
Mark Williams	16
Mary Dyre & Anne Hutchinson Memorial	17
Cook's Corner	18

### **Photo Credits:**

Pages 10 and 11 - Courtesy of Leon Shaw and the Point Association's History and Archives

### **Art Work:**

Front Cover: Nan Pease

Other: Dorothy Sanschagrin, Eleanor Weaver and Marguerite Lloyd

## **Winter 1995-96 CALENDAR**

December 2	Adventure Club Holiday Party (page 8)
December 13	Caroling (page 4)
December 19	Christmas Explosion (pg. 10)
December 24	Carol Sing 10:45 p.m. and 11:00 Mass at St. John's
December 25	Christmas Day Mass 10 a.m. at St. John's
January 24	History & Archives (page 4)
February 5	Gas Lights Information Meeting (page 4)
February 10	Puzzle Challenge (page 4)

## OFFICERS

Christine Montanaro, President	849-4708
Donna Segal, 1st Vice President	848-7088
Roberta Majewski, 2nd Vice President	846-6194
Lois Dickison, Corresponding Secretary	846-4367
Ben Gilson, Recording Secretary	847-9243
Philip Mosher, Treasurer	849-4708
(Note Phil's telephone number. He is not the one listed in the phone book.)	

## GREEN LIGHT

### **CO-EDITORS**

Florence Archambault  
Katharine O'Brien

### **STAFF**

Esther Fisher Benson  
Nancy Espersen  
Sue Gudikunst  
Rowan Howard  
Anita McAndrews  
Anne Reynolds  
Sharon Schultz  
Joe Vars  
Virginia Covell - Editor Emeritus  
John Howard - Advertising  
Katharine O'Brien and Sharon Schultz - Circulation  
Nancy Espersen - Typing

Copies of the *Green Light* may be purchased for \$1.00 at **Bucci's Convenience Store**, Poplar and Thames Streets; **Aidinoff's Liquor and Gourmet Shop**, Warner Street; **Clipper Wine & Spirits**, Third Street and Walnut Market, Third and Walnut.

## President's Letter

Fall proved to be a very busy and successful time for the Association. Many new members joined the ever faithful at our selection of programs. Thanks go to all the volunteers who made each event distinctive and enjoyable.

The election has come and gone. We hope all took the time to vote. We welcome the new City Council, and we especially welcome our new First Ward Councilor, Laurice Shaw. We look forward to a cooperative and productive relationship.

The project for time share units at Long Wharf by Eastern Resorts seems to be moving along quickly. The Association has hired the law firm of McGovern Noel and Benik to review the site remediation plan for contaminants on the property and to advise us about our rights to ensure that an appropriate remedy is implemented. We have asked that the proposed agreement between the State of Rhode Island and Eastern Resorts Company, L.L.C. be adjusted on the issue of lawful claims. Mr. Donegan, our lawyer, has stated that the language in Paragraph 25 of the Agreement raises concerns that "the State is in some way insulating the developer from any lawful claims which area children may have against the developer should area children suffer lead poisoning as a result of the contamination on the Property during the developer's ownership or control of the property." While Mr. Donegan feels that such was not the intent of the State, he did advise the State that the Point Association feels that this position must be made clear in the contract with the developer. We await the State's response.

As the year end nears, I find these past few weeks have been a time when I have looked back on my term as President and have realized the benefits that accompany such a position.

Over the years, I have had the opportunity to meet people I might not have otherwise met. I am also able to welcome newcomers to the neighborhood and to help them feel instantly at home. Working with the Point Association's Membership Chair and Committee proves to me that the "good neighbor spirit" is alive and well on the Point.

Not only has my experience as President allowed me to grow personally, but it also increased my political awareness. I wish that everyone in Newport could have the opportunity to have the insider's view of how our community works. It came as the biggest surprise that community involvement is relative. It is clear to me, however, that those that get involved not only stay involved but also continue to increase their participation. The level of commitment of Point members proves that the Point Association is not a social club but part of the quality of life unique to this neighborhood.

During my tenure, the Board of Directors has been wonderfully cohesive and supportive. Our sense of purpose still provides the unifying underpinnings for the Board despite the diversity of participants. At the present time, we are developing a mission statement with goals and objectives that will be used as a guide for the Association for both the immediate future and the next decade. In addition to the organization's aims established 40 years ago the Point Association wishes to encourage and emphasize fellowship and family pride, community involvement, civic awareness, voter education and voter responsibility. Moreover, the Association will begin the task to "know thyself" by undertaking a self-survey and census of the neighborhood and membership.

Also in my term as Point Association President, the membership has begun a new preservation initiative - not to preserve old houses but to preserve the documents and records of the association itself. With our past records intact, organized and accessible, everyone will be able to see what made the association so successful and will take from that the enthusiasm to keep going for at least another 40 years.

Although we tackle some of the big issues, the real pleasure is the opportunity to walk by newly planted trees and visit our neighbors' hidden gardens. The Beautification Committee has always been hard working and ambitious and has succeeded at both a neighborhood and city level.

All in all, the ultimate satisfaction for me as President is that I have been able to give back something to a community that has nurtured me and my family. I look forward to the next year with enthusiasm and confidence.

In closing, I wish for joy and contentment for all during the Holiday Season and during the coming year.

*Christine Montanaro*

## Caroling on the Point

Come join the chorus of voices on Wednesday, December 13, 1995. The carolers will meet at St. John's Guild Hall, 61 Poplar Street, at 5:30 p.m. for a steaming bowl of chowder provided by Music Hall Cafe. Following a brief practice session, the group will be off to tour the Point, stopping for a hot toddy and dessert now and then.

Please be sure to dress warmly and bring a flashlight. Sheet music will be provided. Please call Peggy Comfort at 847-3261 to let her know you'll be joining us. Families welcome!

## Gas Street Lights

Interest in obtaining more gas lights on the Point has been expressed by some residents. Brian Pellitier of Newport Gas Light, founded in 1853, was asked to give a little background on the subject. He writes:

"Approximately 35% of the historic (reproduction) gas lights in Newport grace the Point section. They were installed in the late 1970s with donated money from mostly private organizations. They are quite accurate copies of the lamps in place during the later part of the 19th century. I would call them the Mercedes-Benz of historic lighting not only because of their visual appearance, but because of the traditional material used in their making (cast iron, copper, glass). I see no problems with the present lamps other than the regular necessary maintenance. Vandalism appears to be down, most damage comes from tall vehicles hitting the lantern (rental trucks with inexperienced drivers and oversized RIPTA buses).

Looking ahead, I think the Point should concentrate on installing lamps on the "tree name" streets beginning with Elm Street.

Keep in mind, however, that the lamps are only a part of the street-scape. Appropriate historic sidewalks, plantings, curb cuts and proper historic maintenance of the homes is of equal importance."

For more information about this project or the meeting, call Anne Bidstrup at 849-1354.

### Gas Light Information Meeting

Monday, February 5  
St. John's Guild Hall  
6:30 p.m.

## Editor of Green Light Retires

It is easier to say "thanks" than "good-bye." Ten years ago Florence Archambault joined the staff of the *Green Light*. Her interest in research and talent in writing have been evident in all issues dating back to June of 1985. The staff has had lots of growing pains always offset by good times as we worked together. Typewriters have given way to computers and the staff has experienced changes too. When our able editor, Virginia Covell, could not continue, who would take her place? Fortunately Florence graciously stepped forward and so it has been since April, 1991.

Now, sadly, Florence tells us this will be her last issue as she goes on to other things - like another book to be published in 1996. We think she still has some *Green Light* in her blood so hopefully you will hear from her off and on. We extend to her our grateful thanks and all the best wishes in her many endeavors.

The *Green Light* Staff

## HISTORY AND ARCHIVES

Next meeting is Wednesday, January 24

10 a.m. at the Nina Lynette Home

87 Washington Street

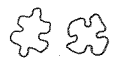
(Please use the Cherry Street entrance)

All are welcome to come!

Call Kay (847-7311) or Rowan (847-8428)



## Puzzle Party



Enjoy Mysteries? Enjoy puzzles? Come join us for the Point Association's first *Jigsaw Puzzle Marathon* on Saturday, February 10, 2 p.m. at the St. John's Guild Hall, 61 Poplar Street. Enter the intriguing world of *BePuzzled*. Groups of four will compete as teams to complete a 500-piece jigsaw puzzle, and then attempt to solve the mystery portrayed within. Sound challenging? It is!

Each team member is asked to raise \$25 from local sponsors. Sponsors and spectators are encouraged to come watch the teams as they work to piece the puzzle together and find the solution. The winning team will receive gift certificates to the restaurant of their choice.

Refreshments will be provided. The BePuzzled Corporation is donating the puzzles for the event. For more information or to sign up, please contact Christine Montanaro at 849-4708.

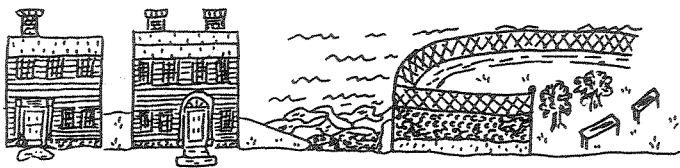
## Fabulous Forties Cruise

The second annual boat cruise on the *Spirit of Newport* was not only a social success but a financial one as well. Approximately \$1,000 was raised through ticket sales and the silent auction. Auction items ranged from a gourmet breakfast at Angela and Joe Vars' house, a weekend at Lois and Bruce Dickison's house in Maine to a dozen bagels a month for six months.

The success of the cruise was due to the members of the Point Association who not only bought tickets but solicited and donated auction items.

I want to personally thank everyone for their generosity and enthusiasm. You all make a fund-raiser a real pleasure to do.

Roberta Majewski



## Wine Tasting

A crisp fall afternoon, good company and great wine: what more could one ask for? The second annual Point Association Wine Tasting took place on September 24 and was a success once again. Chamard, Sakonnet, Stonington and Westport Vineyards supplied us with excellent vintages and the Vars, the Flynns, the Kirbys and the Maddens, owners of Stella Maris Inn, were all perfect hosts.

Special thanks goes out to all of the committee members who pulled the event off without a hitch: Peggy Comfort, Ginger Hornaday, Donna Segal, Kate Cook, Fran Babcock, Corky Ackman and Rowena Dery. A thank you is also due our supporters: Sid Wainer, The Market on the Boulevard, Signal Graphics, Toni Peters, Spring Valley and Taylor Rental. Thanks to Aidinoff's and Clipper Wine and Spirits who sold tickets for us and who gave us lots of publicity, St. John's for providing the beautiful Guild Hall, and of course, all of the great volunteers who helped out that day!

See you all next year!

## Another Scary Night at The White Horse Tavern

On Sunday, October 29, Newport's historic White Horse Tavern hosted the second annual Ghost Story Party, a night of scary stories as a fund-raiser for the Point Association. Members of the Association and other guests gathered in a darkened room on the second floor at the local tavern to share stories of haunted happenings. It is on the second floor that the tavern's ghost is sometimes seen. Tavern curator, Anita Rafael, retold the story of the spirit that walks the old pub, believed to be the ghost of a traveler who mysteriously died there.

The prize winning story of the evening was told by Laura Hart of Middletown, who related her personal experience with dual ghosts in a bed and breakfast where she and her husband were one-time guests. Laura believes she was introduced to a spirit of an old sea captain, an apparition which the innkeeper later verified as the former owner of the house. Laura also said that the ghost of the captain's housekeeper and caretaker, a neighbor lady from across the street, also came to look after her while she was there. Laura's prize was Sunday Brunch for two at the White Horse Tavern.

The winner of last year's prize for the best story, Gordon Armstrong of Walnut Street, updated the tales of the ghost Phoebe. According to Armstrong, his dog Rhody, a 90-pound Rhodesian Ridgeback, is the primary link to the spirit of Phoebe.

Other story tellers included Lois Dickison, who told tales of footsteps and other unexplained happenings at her Thames Street house. Dick Poholek told of his and his wife Cheryl's discovery that portions of their house, an old parsonage on Poplar Street, may have been used for funerals and wakes, and the room still seems to bear the chill of the long deceased. Rob Cook of Elm Street told about a very kindly, gentle woman ghost that appeared, just once, before him and his wife in their historic house. Christine Montanaro, President of the Point Association, told of her repeated contact with a ghost in a house she once rented in Little Compton.

Although none of the stories told were authenticated by professional spiritualists or "ghost-busters", as they are now called, the guests clearly suffered from chills and goose bumps throughout the evening.

This popular sell-out event raised funds which will be earmarked for preserving the history and archives of the Point Association.

## Beautification - Fall Planting

Many thanks to the volunteers who braved the cold windy day on Saturday, November 4, to plant spring bulbs and clean the parks on the Point. Kay O'Brien, Jim and Carol Marinan, Dick Poholek, Paul Quatrucci, and Deb Herrington planted 600 daffodil and crocus bulbs under the trees on the Marsh Street island. We'll be treated to a beautiful spring in bloom!

Mary Jane Rodman, Donna Segal, Toni Peters, Jill Muennich, Anne Reynolds and her grandson Geoff spent the morning cleaning up Storer Park. They bagged leaf debris, clipped branches, and cleaned out the gardens along the Hunter House border. Because of their efforts the hedge will be able to grow thickly through the link fence.

Our crew "the dirty dozen" spent two hours helping to make our community areas better. The work went quickly and all were pleased with the results. "It's just great to be outdoors and help the Point look better at the same time," said Kay. Mary Jane commented that a team of hard workers can really accomplish a lot in such a little bit of time. Maybe we'll see you at the Spring Cleanup?!

## Welcome to Our New Members

Paul and Sharon Barton  
Neil and Philippa Coughlan  
Don and Marjorie DeAngelis  
Ken and Mona Fancher  
Mrs. Sallye Jestings  
Marjorie Magruder  
Jim and Laurie Rountree  
Laurice Shaw  
Leon and Doris Shaw  
Eileen Sullivan  
Dominic and Suzanne Varisco

Interested in becoming a member of the Point Association? Call Nancy Espersen at 846-2907.

**Colonial Travel**  
Incorporated

170 Spring Street • Newport, RI 02840  
Tel. (401) 849-6433 • Fax. (401) 849-7503  
800-887-4680

## Elizabeth Meyer Speaks at Annual Meeting

Local businesswoman and entrepreneur Elizabeth Meyer spoke to a large group of members at the annual meeting of the Point Association on October 26. She entertained Pointers with a slide presentation that documented her restoration of the J Class sailing yacht *Endeavor*. Meyer's wonderful anecdotes did not soften the challenges she faced in such a project.

She continued with an overview of her current project, the International Yacht Restoration School. IYRS is in the process of moving into the old Electric Company building on Thames Street, purchased from the Museum of Yachting along with another of Meyer's J Class restorations, the yacht *Shamrock V*. IYRS will teach skills needed for yacht restoration then put the new craftsmen (or women) to the test on actual restoration projects. Her first major goal is the restoration of the classic yacht *Coronet*, which arrived in Newport harbor this fall. She asked the Pointers to dig deeply in their pockets and to support this not-for-profit marine school.

Meyer closed by reminding the audience that *Shamrock V* is available for charter for a mere \$20,000 per week, a bargain compared to *Endeavor* at \$60,000.

Anyone wanting more information about IYRS is invited to call 849-3060.

Peggy Comfort

## Other Notes From the Annual Meeting

The following officers were elected: Donna Segal, Vice-President; Ben Gilson, Recording Secretary; and Phil Mosher, Treasurer. Joe Vars, Kate Cook and Tom Sturtevant were named to the Nominating Committee.

\* \* \* \* \*

It was requested that the mission statement and budget be printed in the Green Light. The first draft of the mission statement can be found on page 7; the budget on page 19.

  
**CLIPPER**  
Wine & Spirits

**Your ship  
has come in!**

*Specializing in fine  
imported & domestic  
wines*

48 Third Street  
Newport, RI 02840  
401 846-7993

**Point Association  
Mission Statement  
First Draft 10/95**

We the people of the Point Association resolve to commit resources and energy to the maintenance and improvement of the quality of life in our neighborhood and for the betterment of the city of Newport. To accomplish the objectives of this mission, the Association's tasks in the next ten years will be:

1. to conduct a comprehensive membership and neighborhood survey
2. to create programs for community awareness and voter education
3. to inform and support people who wish to rehabilitate residential properties on the Point
4. to utilize the parameter of family values to promote community values

**1. Membership and Neighborhood Surveys**

The purpose of this effort is:

- to give the board and committees more information with which to plan and promote events, inspire participation in the Point's activities, and to create fellowship
- to help promote community awareness
- to assemble and disseminate accurate facts about the Association and the neighborhood to the press and the media

**2. Voter Education and Programs for Community Awareness**

The purpose of this effort is:

- to ensure that the Point Association is an excited, highly motivated informed voting body
- to encourage voter registration citywide to provide information to political candidates and serving elected officials about the Point Association's political character and disposition
- to provide accurate political information to the press and media
- to redefine the Point Association as a politically aware organization

**3. Support Residential Rehabilitation**

The purpose of this effort is:

- to continue the ongoing work of the recovery of the zone
- to add more landmark sites to the National Register of Historic Districts

**4. Family Values into Community Values**

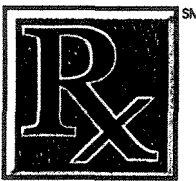
The purpose of this effort is:

- to ensure that all units in the neighborhood - seniors, singles, widows, one parent households - are included, along with traditional family units, in all Association planning and programming
- to foster their participation in the community of Newport

The board will be working on the mission statement throughout the winter and present the completed version at the April general membership meeting. If you have comments or input regarding the statement, contact a board member (names are listed on page 2 of the *Green Light*). The Association membership will vote on the statement at the April meeting.

\* \* \* \* \*

**FURNITURE MEDIC<sup>®</sup>**



**John Sadler  
Catherine Sadler**  
Owners

☐ On-site repair  
☐ Scratches, dents  
☐ Gouges  
☐ Scuffs, scrapes  
☐ Broken joints  
☐ Chair regluing

**(401) 847-7444  
Fax (401) 841-0516**  
EACH FRANCHISE INDEPENDENTLY  
OWNED AND OPERATED

**GERALD W. SEIGEL**  
FIRST VICE PRESIDENT  
FINANCIAL CONSULTANT  
PRESIDENT'S CLUB  
401-849-6300

**SMITH BARNEY**  
  
SMITH BARNEY INC.  
747 AQUIDNECK AVENUE  
MIDDLETOWN, RI 02840  
401-846-6088 FAX  
800-556-7008 US



# Adventure Club News

## Halloween Parade



The Adventure Club Halloween Parade on October 29, 1995 was undoubtedly a success. The entourage of ghosts, goblins, witches and pumpkins met on a windy Sunday afternoon for a parade around the Point followed by refreshments and music at St. John's Guild Hall. We had a tremendous turnout of about 50 young people and quite a few pets as well! The dressed-up included a pirate, several elegant princesses, a dragon, two pumpkins, a power ranger, an Indian brave, a lion (that slept through the whole parade), a cow, a prison inmate, a gypsy, two devils and two bumblebees. Thanks to Beth Lloyd and Jill Spohn for organizing the event, and thanks to all of the volunteers who made those delicious treats, which disappeared faster than lightning! A special thank you to Marguerite Lloyd who captured the festivity of the parade in her artwork.

\* \* \* \* \*

## Parents Planning Meeting

Monday, January 15, 1996  
7:30 p.m.

At the home of Sharon Schultz  
Nine LaSalle Place

Come share your ideas about the upcoming spring and summer, so we'll have plenty of activities to keep our adventurers busy in the seasons to come.

## Holiday Party



Sunday, December 3, 1995  
3:00 to 4:30 p.m.

St. John's Guild Hall  
61 Poplar Street  
Canned food donation requested

Come join the Adventure Club as we celebrate the holiday season. Play games, make crafts and just have a great time. Please bring a canned good in lieu of a donation. Help is needed to supervise activities and bake goodies for the kids. Contact Sharon Schultz at 846-6762 if you are interested in helping out.

## Board Position Available

We are looking for an individual or pair of individuals who would be willing to sit on the Point Association Board, which meets monthly, to share any Adventure Club news. To sign up or for information about the Adventure Club, please contact Beth Lloyd at 849-8071 or Jill Spohn at 849-2155.



TEN SPEED SPOKES • 18 ELM STREET • NEWPORT, RHODE ISLAND 02840  
Sales  
Service  
Rentals

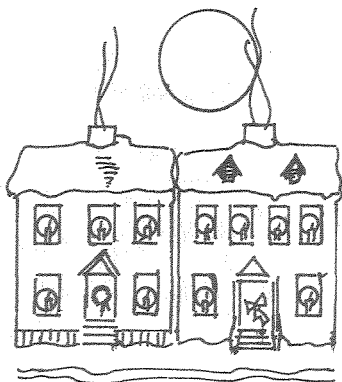
Tel 401-847-5609

Coming Spring of '96 - Kayaks



## Point Pulitzer Awarded

The first ever Point Pulitzer was awarded to John Pantalone of *Newport This Week* for "distinctive journalism and a leadership role in the commemoration of the Point Association's 40th anniversary." The presentation was made by Association President Christine Montanaro and Publicity Co-chair Dick Poholek at the annual meeting in October. Accepting the award for Pantalone was Elizabeth Benjamin.



## While Walking on the Point

The leaves are gone, the winds are biting, neighbors are indoors, but my daily walk always brings surprises. On a cold gray mid-November day, as the lone observer on the causeway, my surprise was the departure of the *Seneca*, the huge Coast Guard vessel which has been dominating the ways at the American Shipyard on Washington Street. She arrived sea weary and worn and left sparkling white with newly-painted slashes of orange aside her bow. The draping of the vessel had been seen and the sandblasting heard. No ceremonies marked her departure, just a lifting of the gangplank, some toots from the accompanying tug, and her imposing shape leaving the inner harbor. Across the causeway the floating docks rest on land as do most of the boats. Sights change as do the seasons.

Kay O'Brien

## 40th Anniversary

Whether you are a member of the Point Association, or hope to be, you must certainly agree that this is an organization to be proud of and looked up to. It is solvent, active, social and concerned; all the elements of a 40-year-old successful organization. The numerous articles and activities celebrating this very special anniversary have certainly encouraged new memberships, greater attendance, new advertisers in the *Green Light* and a keener awareness of the organization through this publication.

The continuance of the Point Association is still dependent on our membership. Its volunteerism, its participation, ideas, suggestions, and financial support in matters affecting the Point are the prime ingredients of an often imitated idea.

It is the fondest hope that the next 40 years will be as productive as the last 40 years. When the confetti is swept up and the balloons have lost their helium, please do not discard your enthusiasm or all the traits that have made this Association what it is. There is more work to be done by everyone. We need more planting and cleanup, more vigilance for the Marine Terminal and watchful eyes and ears for the development on Washington Street.

The original ideas of the founding members of the organization have been upheld and elaborated on throughout these four decades. Our historic Point area is more attractive because of renovations and restorations than it was those many years ago. It is greener because of tree planting programs and blooming gardens and boxes; more visitor oriented because of our architectural gems . . . some standing for more than 250 years.

In closing, we invite those residents who would "like to be members" to join us in working to keep the area desirable for another 40 years and the generations to come.

Joe Vars



*Rue de France*

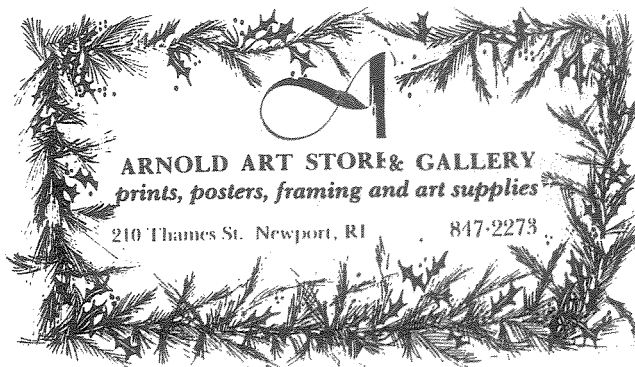
*The Shop for French Country Living*

IMPORTED FRENCH LACE • CURTAINS AND GIFTS FROM FRANCE

78 Thames Street, Newport

846-3636

Hours: Monday through Saturday 10-5:30, Sunday 12-5



## The Great Christmas Explosion of 1934 on the Point

The early dark morning hours of Christmas, 1934, were rocked by an explosion on the corner of Third and Poplar Streets on the Point in Newport. The concussion from the blast shattered windows over more than a one-block radius and severely damaged more than a dozen homes. People rushed from their houses in sleeping clothes and were showered by falling debris. Mixed amongst the wreckage were the tinsel, garlands, and wreaths that had bedecked the shattered homes in anticipation of a typical Christmas celebration. For dozens of Point residents made homeless by the explosion Christmas seemed to have been destroyed along with the walls, windows, furniture, toys and clothing.

On Tuesday, December 19, at 7:00 p.m. Ron Potvin of the Newport Historical Society will present a talk on the *Great Christmas Explosion of 1934 on the Point* at St. John's Guild Hall, 61 Poplar Street. The talk is the culmination of more than a year of research by Potvin and will be presented as part of *Christmas in Newport*, which is celebrating its 25th year. The event is being co-sponsored by the Point Association, the Newport Historical Society, and St. John's Episcopal Church. A suggested donation of three dollars per person is requested to support the activities of these organizations. The collaboration between these organizations is a reflection of the unique way that the Christmas explosion of 1934 touched diverse elements of Newport's population.

It is appropriate that the talk be given at the newly-restored St. John's Guild Hall. Communicants of the church returning from midnight mass were the only witnesses of the explosion. In addition, the house that was destroyed had once been owned by Peter and Harriet Quire, founding members of the congregation that became St. John's. Peter Quire was an African-American shoemaker and has received much attention from historians of the congregation. Potvin has focused instead on Peter's wife Harriet, descendant of a succession of African-Americans who settled on the Point, including Nathaniel Rodman, a founder of the African Benevolent Society, and Arthur Flagg, a successful and prominent member of Newport's African-American business community and treasurer of the African Union Society. This part of the story, as it unfolds, is evidence of the strength and importance of

family and social ties within Newport's African-American community during the 19th century.



The Christmas explosion of 1934 marked an important moment in the history of Newport and the Point. The country was mired in the depths of the Great Depression and this disaster seemed to be the exclamation point on a period of change for Point residents. The days of corner stores on every block, street peddlers, and band concerts in Battery Park seemed to be coming to an end, making the explosion an especially painful reminder of those changes for people who were alive when it happened. In order to show these changes, Potvin has explored the early history of the Point and the stories of the first tenants of "lot 108," the site of the explosion. These tenants included a rum distiller named John Brown and Horatio Feke, a son of portrait painter Robert Feke.

Of course, the explosion is the main topic of the talk. The investigation into the cause of the blast eventually focused on the owner of the building, an Italian barber and landlord named Salvatore Raffa. The subsequent arrest and trial of Raffa competed for local headlines with FDR's "court packing" scheme and the trial of Bruno Hauptman for the kidnapping of the Lindbergh baby. The verdict of the trial (which should surprise many listeners) has been hotly debated ever since.

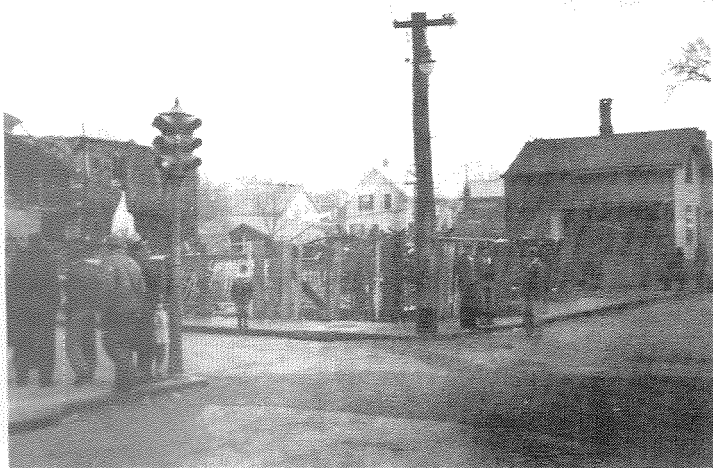
The story of the Christmas explosion of 1934, then,

(cont.)

is much more than a Christmas story. However, the elements of Christmas will not be neglected. The outpouring of charity and goodwill toward the homeless victims of the explosion was certainly augmented by the spirit of the season. Potvin also will show slides depicting people and places relevant to the topic, including scenes of winter and Christmas during the early 20th century.

The Point Association will provide refreshments after the talk, and people are encouraged to linger and chat with the speaker about their memories of the explosion. The talk is dedicated to the memory of the recently deceased Gladys Bolhouse, lifelong Point resident and Newport's first official City Historian.

For more information, please call 846-0813.



### ***The Great Christmas Explosion of 1934***

by Ron Potvin  
of the Newport Historical Society

December 19, 1995

7 p.m.

St. John's Guild Hall

Co-sponsored by the Point Association,  
the Newport Historical Society and St. John's

Suggested donation: \$3

### **Gladys Bolhouse 1899-1995**

When Gladys Bolhouse retired from the Newport Historical Society in 1992, *The Green Light* tribute by Kit Hammett and Kay O'Brien called her a "Point and a Newport Treasure." She was a personal treasure for many people - seldom seen outside her Historical Society, but always a joy. She knew whole families by name - even the newest generation of look-alikes in a family. I often saw her walking near her Charles Street home and along Broadway and Thames and "up the hill" to Redwood Library and the Historical Society.

Mrs. Bolhouse participated fully in the life of Newport and took interest in everything the city offered. Her membership in the Newport Historical Society, the Daughters of the American Revolution, the Redwood Library, the Rhode Island Genealogical Society, the Point Association, the Rhode Island Historical Society, the Miantonomi Park Commission, the Society of Mayflower Descendants, and the Newport Public Library give an idea of the breadth of her interests.

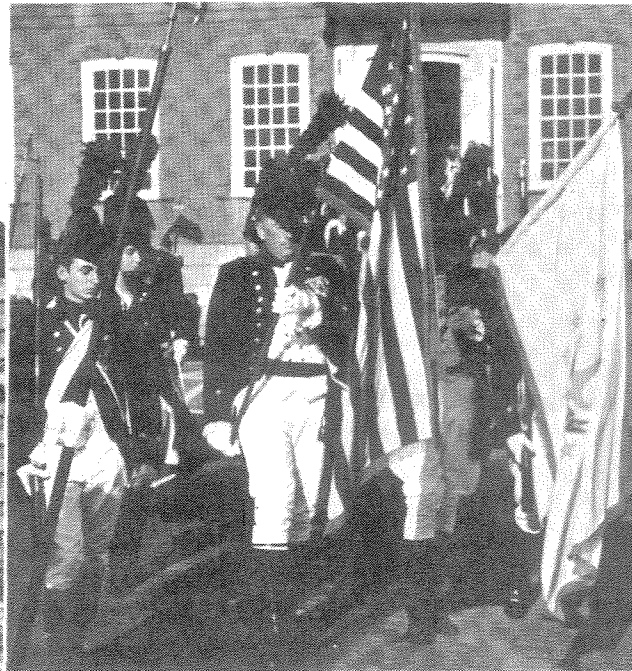
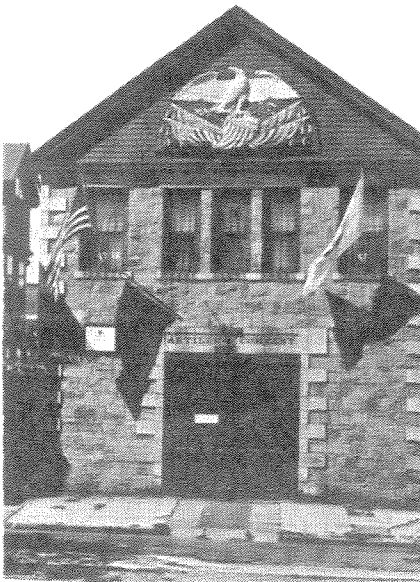
A memory I keep is the lady carrying an aluminum folding chair down Chestnut Street to the seawall to watch the Tall Ships in the harbor. She didn't need a book or radio and refused even a cool drink - just watched the ships all afternoon.

Daily life at the Historical Society in the 60s was civilized with afternoon tea served with her lemon squares. We had her recipe but never approached their goodness. Nowadays the last thing a feminist wants is a reputation as a cookie maker. Mrs. Bolhouse was the affirmation that strong women not only eat cookies, they make them with no loss of independence. This is the lady who, though born in the last days of the 19th century, joined the navy a war sooner than most women, raised a family while working as a secretary at St. George's School and began what was to be her life's work when most people are beginning to yearn for retirement. She lived the 20th century fully.

We'll miss her for her spirit, her candor and her indomitable independence. We'll remember her for her generosity and kindness - to students, to tourists, to acquaintances and friends.

Anne Reynolds

## History on Post Cards



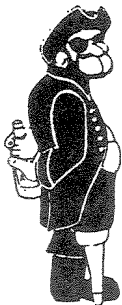
Although this post card is a more modern one than usual it is a good picture of the Newport Artillery Company and its building on Clarke Street. Founded in 1741 with its first headquarters in the Old Colony House, the artillery is the oldest surviving military unit to have served actively under two flags, the Royal Ensign of Great Britain and the Stars and Stripes. A group from the Company served in the Continental army and in July of 1814 (during the War of 1812)

manned a Battery at Fort Greene on the Point. In 1834 Audley Clarke made a gift of land on Clarke Street to build an armory. The contractor was Alexander McGregor, who had worked on Fort Adams. The building was completed in 1835. In 1906, after a disastrous fire, the building was enlarged and a second story added. In the center of its pediment is the emblem from the paddle box of the *S.S. Metropolis*, which was presented to the Company in 1880 by Colonel John Hare Powell. Today the duties of the Artillery are mostly ceremonial. Members, in their colorful uniforms, are visible on the Point during the *Christmas in Newport* Candlelight House Tours.

Florence Archambault

## On Goat Island

### RUM RUNNER



All New Deli

Breakfast

Groceries

Beer

Wine

Liquor

New Deck

**\*FREE DELIVERY\***

Plenty of parking at the Front Door

847-7600



Lunch - Dinner

Sunday Brunch

Entertainment on the patio  
Outside Patio Bar May - October

Water Shuttle service  
from Bowen's Wharf

Free Parking

846-2675



## Happenings for the Holidays

Expect a busy month of December as *Christmas in Newport* celebrates its 25th year. It all starts with a bang by the Newport Artillery's salute in Washington Square on December 1 and ends with the Cultural Commission's *Opening Night '96* on the 31st. The Old Colony Railroad's North Pole Express will run through the Point. There's a giant gingerbread lighthouse at the Marriott Hotel, the Turtle Frolic at the Doubletree Hotel, the Tavernkeeper's Reveillon at the White Horse Tavern, children's art at the Newport Yacht Club, special music at St. John's, and at the Naval War College, a Christmas concert and an art exhibit, to name a few of the events.

Once again it is time for Point homes to sparkle with white lights in the windows and for doorways to be festively decorated for all to enjoy as they pass by. Perhaps one will win a prize in the doorway contest.

A special highlight of the season is the Candlelight House Tours of homes the three days after Christmas. If you would like to be a hostess for the tour, call Vance Gatchell at 848-7017. One house is your assignment; the rest are yours to visit and enjoy.

Dates, times and details for these festive and fun events are listed in the *Christmas in Newport* brochure that can be found at the Visitors' Center or in the newspaper. Elsewhere in the *Green Light* you will find the Point Association's holiday activities listed.

\* \* \* \* \*

Did you recognize *Green Light* co-editor Kay O'Brien in the Holidays issue of *Newport Life*? She is pictured awaiting Candlelight House Tours guests.

Christmas Cards  
& Prints  
of Newport

at the Third & Elm Press  
29 Elm Street, Newport  
846-0228



Visit our shop Monday through Saturday 9 to 5 —

## Opening Night '96

Come join in Newport's celebration of the arts! The Cultural Commission's *Opening Night '96* is a non-alcoholic, family-style event which celebrates the arts and cultural talents of the community. This New Year's Eve event will feature local artists such as Newport Children's Theatre, Off the Curb Dance Troupe, David Provost, Leroy White, and Cat Tails. Many of our city's historic sites serve as host locations for showcasing the performing and visual arts talent. *Opening Night '96* will be our city's fifth annual celebration. Buttons will be on sale soon and proceeds go to the John Chatty Memorial Youth Scholarship Program to provide Newport's youth an opportunity to pursue studies in the arts. Watch the local newspaper for a complete list of times and events.

## Holiday Events at St. John's

### St. John's Christmas Fair

Saturday, December 2 - 9 a.m. to 2 p.m.



### Greater Tiverton Chorus Concert

Saturday, December 2 - 7:30 p.m.

\$8 (\$6 seniors and children)



### An Advent Procession with Carols

Wednesday, December 6 - 6:00 p.m.

Reception Following



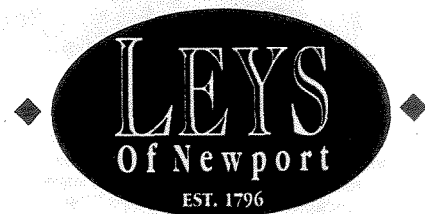
### The Great Christmas Explosion of 1934 on the Point

Tuesday, December 19 - 7:00 p.m.

St. John's Guild Hall - \$3 donation



A Newport Shopping Tradition Since 1796



Clothing & Accessories For Men & Boys  
Quality Gifts Fine Home Furnishings

Long Wharf Mall Validated Parking 846-2180



## Time Shares at Long Wharf

The Eastern Resorts Company has purchased the vacant lot on Washington Street across from the State Fishing Pier and American Shipyard. The company plans to build approximately 70 time share vacation suites on the property. The first phase of the \$5 million dollar project will be the renovation of the former Mac's Clam Shack on Long Wharf. Construction of a new four-story building on Washington Street, which will house most of the time share units, should start next summer. It will be designed by Newport architects Charles Ficke and John Grosvenor in a "turn of the century" shingle-style architecture. Spring 1997 is the expected completion date for the project.

Concern has been expressed in regard to the environmental pollution on the site. Much of the property on which Eastern Resorts plans to build is contaminated with lead, resulting from the soil that was used to fill in the cove 100 years ago. Eastern Resorts plans to either pave over, build on or cover all of the contaminated soil and reports DEM has accepted their plan.

Eastern Resorts operates about 200 time share units in our area. They include Newport Onshore off Thames Street, Inn on the Harbor on Thames Street, Inn on Long Wharf and Bay Voyage Inn in Jamestown.



*Come Taste  
the Flavor of  
Northern  
Italy...*

### *Right Here in Newport!*

The new Cafe del Mare prepares authentic northern Italian dishes from an array of delicious appetizers, pasta, chicken, fish, and veal specialties to freshly baked desserts.

So when you're in the mood for good northern Italian food, fine wine, and a spectacular view of the harbor, come to the Cafe del Mare. It's not in Italy, but it's the next best thing.

Open for dinner Tuesday -  
Saturday from 6:00 to 10:00 p.m.  
Reservations suggested, call  
(401) 849-7788.

*Free hotel parking available!*

*Cafe del Mare*

Located in the Newport Marriott  
75 Long Wharf, Newport

## From Laurice Shaw First Ward Councilor-Elect

The historic Van Zandt Pier is one of the long standing delights of the First Ward. People have been swimming, fishing and soaking up the beautiful view there for years. Now, however, weather, vandals and neglect have taken their toll. Today it is in shabby, dangerous shape. The Friends of the Waterfront and the Point Association drew attention to this fact with a petition to the City and "Van Zandt Pier Days" this past year. What are the prospects for the pier in the years to come?

I spoke to Susan Cooper, the Director of Public Works and Recreation, and learned that no full assessment has been made to completely restore the pier but that the City Engineering Department did a cursory assessment a few years ago when the Elm Street Pier was studied. Extensive work on the Van Zandt Pier is tentatively scheduled for the 1997-98 Capital Improvement Plan. It seems too unsure and far in the future for me.

What can we do when too little money is allocated for too many projects? We can form a focus group to ensure the Van Zandt Pier gets the attention it deserves. I feel strongly that 'special interest' or advocacy groups like this play an essential role in the management of a community. They are our eyes, ears and consciences against neglect and oversight. As the ward representative I will need the help of such groups to do the hard work that needs to be done.

I have spoken to the folks from the Swamp Association, the Point Association and Friends of the Waterfront and there is interest in combining forces to get the Van Zandt Pier back up to what it should be. A collaboration like this would be a great way for the different groups to work together and could only increase our chances of success. We can organize fundraisers, help with ongoing maintenance and find the toes that need to be held to the fire to make things happen.

"We are faced with insurmountable opportunities," Pogo said. He was, no doubt, talking about Newport.

## BUCCI'S COMBINATION STORE

Liquor, Grocery and Videos

3 THAMES STREET NEWPORT, R.I. 02840

ANTHONY BUCCI

PHONE 847-0035

## Introducing Mark Williams Traffic Chairperson

Mark Williams and his wife Victoria, Point residents since 1989, have a two-year-old son, George. Mark is a self-employed financial planner and Vicki works at Newport Hospital. Their Van Zandt Avenue home was known as "Gull Rock Cottage" where Louise Sherman, a Point historian, was born and lived with her family for 12 years.

Mark explains his purpose for working on the traffic committee as:

"My interest in the role as Traffic Chairperson stems from our concern for the well-being of the burgeoning population of small children here on the north end of the Point. Since the repaving of Van Zandt Avenue, we have witnessed an increase in both traffic volume and speed. Our complaints to the police department have proved ineffective. And although credit is due to our former council person, Jeanne Marie Napolitano for her prompt response to my calls which resulted in additional 'slow children' signs, they too have been ineffectual in curbing speeds. Coupled with the typically casual acknowledgment of stop signs, it's amazing that there hasn't been a serious accident. We are also aware of the growing use of Van Zandt and

Washington Streets as shortcuts for commercial traffic to and from the hotel and shipyard - just notice the vendors' names - it's not hard to tell where they are going. Trucks and tour buses have no business on our narrow residential streets. Friends living on Second and Third Streets have expressed similar concerns about commuter traffic coming and going to the base. In each instance the appropriate signs are posted but are essentially ignored. Clearly we need stricter enforcement. However as that is probably not a viable long-term fix maybe we should consider the potential benefits of rerouting traffic? To broaden my perspective, please share your thoughts and concerns with me. I would like to serve as a spokesperson for Point residents to help implement a permanent solution. Feel free to call me days at 849-1319."

\* \* \* \* \*

Thank you to Ade Bethune who so diligently headed the traffic committee for many years. Her leadership and tenacity proved most helpful in monitoring state DOT plans as they affected America's Cup Avenue and the Point neighborhood.

### BILL DEL NERO CLEANERS AND LAUNDRY INC.

11 Farewell St. Newport, R.I.

THOMAS C. BENISCH  
Production Managers  
WILLIAM F. BENISCH II

(401) 847-6800



*The Waters Edge Flowers, Inc.*

23 MEMORIAL BOULEVARD  
NEWPORT, RHODE ISLAND 02840

SPECIAL FLOWERS FOR SPECIAL OCCASIONS

TELEPHONE 847-1111

Joseph P. T. Vars

**SALT FREE.  
CALORIE FREE.  
DELIVERED FREE.**

What more could you ask?



OK, OK, your first month's cooler rental and 2 bottles of spring water are FREE.\*

Call 846-0916 and ask about our  
Introductory Offer

\*New customer only-deposit required

**Crystal Spring**  
NATURAL SPRING WATER



## Gardening Corner

I've been assessing my spring nursery order. The plants came in fine shape. The problems were of my making. I planted the lovely little *Halesia* tree where it was choked out by my own "thugs" and is forever lost. A *Campanula portenschlagia* turned out to be an old enemy with mandrake roots that I call Granny's weed and have been pitching out for years.

Of great joy are the tiny cyclamen cilicium whose flowers are violet size and who have half-dollar silvery leaves. I force every friend to bend double to look - even friends who are not interested.

The tiny rooted cuttings of the shrub *Callicarpa* grew to 18-inch beauties. All in all though, in the future I'll stick to buying locally after seeing each plant in a garden.

Tips: Water cuttings with willow water - steep twigs or leaves in water (keep in the refrigerator!). *Horticulture* magazine calls this "old wives wisdom." *Salix* is the name for willow and the botanical source of aspirin. Some people put an aspirin tablet in with cut flowers to keep them fresh. Maybe the *salix* keeps rot away.

It will soon be time for delivery of seed catalogues. If you plan a new garden in an old plot, it's probably a good idea to have the soil that will be used for food growing tested for lead. UMass soil testing will do the testing for \$7. Mail a sample and a check to: UMass

Soil Testing Laboratory, West Experiment Station, University of Massachusetts, Amherst, MA 01003. Growing children are most susceptible to lead poisoning so it's even more important for households with children. If lead is found, new soil could be put in raised beds for vegetables. Lead won't harm your flowers.

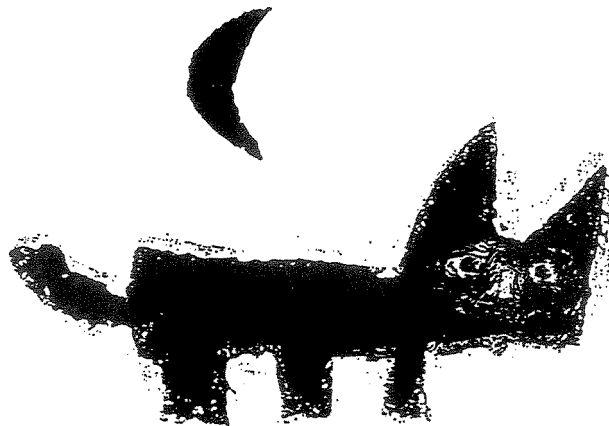
If you are disgruntled about shady mossy spots you might want to grow more moss. To grow moss, according to *National Gardening* (May '93): "Collect a handful of moss and crumble into a glass of beer to which two teaspoons of sugar have been added. Pour this unlikely mixture where you want moss. Keep the spot moist and in a few weeks, you'll have a green cover."

Final tip - to discourage insects from a house plant, shove a few cloves of garlic in the pot, rounded side down. The green growth can be used for flavoring.

A thought from yesteryear. "If Eve had had a spade in Paradise and known what to do with it, we should not have had all that sad business of the apple." Elizabeth Von Arnim from *Elizabeth and her German Garden*, 1898. This book is great garden reading. My copy has no date, but is inscribed "Elsie Lake, 23 Brinley Street. from Mrs. Greene." Granny's books, like her plants, are a living connection. Maybe I'll keep old *Campanula portenschlagia* after all. But I'm sorry I never knew Mrs. Greene.

Anne Reynolds

## Contemporary Folk Art, Crafts & Jewelry



KELLY ⊕ GILLIS

29 America's Cup (next to the Marriott) Newport, RI 02840 (401) 849-7380

**Mary Dyre, First Point Resident,  
and Anne Hutchinson  
to be Honored at Founders Park, Portsmouth**

A proposed memorial to Anne Hutchinson and to her friend, Mary Dyre, has enlisted the support to date of more than 50 Aquidneck Island women. The project was initiated by Valerie Debrule, Newport artist.

Two plaques engraved with the full names of Anne and Mary will be placed on two large reclining stones in Founders Brook Park, near to the boulder called Founders Rock in Portsmouth. The latter's plaque lists all the males present in 1638; it ignores both Anne's and Mary's roles in the exodus from Boston, and the subsequent Pocasset settlement, Portsmouth.

History has recorded much of Anne Hutchinson's life and times. She was literate, a courageous public speaker, a midwife and herbalist, and the mother of 15 children. Anne's Boston gatherings attracted so many men and women that the Puritan leaders became nervous. In 1637 Anne was ordered to leave Boston. It was then that she and her family, and 100 followers, moved to Aquidneck Island.

Anne's first year in Portsmouth brought personal hardships and cruel weather, including an earthquake. Also, political push and shove resulted in the departure of several settlers who would, within that year, establish Newport.

William Dyre and his wife Mary, Anne's devoted friend and fellow dissident, accompanied Anne to Pocasset and then to Newport, where William Dyre was one of four selected to apportion the land and lay out the town. Dyre was granted 87 acres of land. He chose for his home lot that section now belonging to the Naval Hospital. His holdings became known as Dyre's Point. The Dyre family was the first to settle on the Point, their holdings reaching north to what is now the rotary, south to Blue Rocks, with access to their land through Dyre's Gate.

In 1653 William and Mary returned to England to obtain revocation of Governor Coddington's power. That same year, William returned to his duties in the New World and his new status as Freeman. Mary remained in England where she became a Quaker minister. She did not return to her family until 1657,

the year which marked the beginning of Quaker persecution.

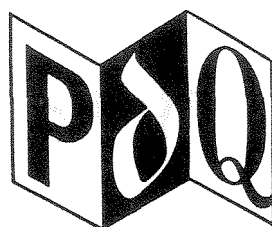
Disembarking in Boston, Mary was immediately imprisoned. William obtained his wife's release by promising the authorities she would live quietly at home, with her family, in Newport. Mary succeeded in her role as homemaker for two years. It was the imprisonment of two friends, Marmaduke Stephenson and William Robinson, that stirred Mary to action. In Boston to plead her friends' cause, Mary was once again arrested and sentenced to death. It was her son William who succeeded in obtaining her reprieve.

Despite two narrow escapes from the gallows, Mary refused to stop preaching. She was imprisoned again in 1660 and executed June 1st of that year. Her husband William lived until 1676; he deeded his land to his son William. The property was, years later, sold by Dyre descendants to Godfrey Malbone. In 1853 Robert Maitland built a house near the old Dyre home. It was not until 1889 that the last vestiges of the Dyre mansion were removed. The Dyre family's remains, headstones included, were settled in the Common Burial Ground. Today Dyres Gate and Dyre Street are the only reminders of the Dyres, our first Point family.

Both Anne Hutchinson and Mary Dyre, heroines of our early history and, with their families, first residents of Aquidneck Island, deserve our recognition. Founders Park is a tranquil glade, green with old willows, alive with the sound of the centuries-old waterfall and stream. The two reclining stones, softly contoured, are well-suited to hold the names of Anne Hutchinson and Mary Dyre.

Aquidneck residents, especially those Dyre "neighbors" on the Point, are invited to sign a scroll which will be buried near the stones. Contrary to rumor, men are not excluded; it is hoped their signatures will honor the name of a woman important in their lives. Signing and contributions towards the two plaques are being accepted at the Little Red Schoolhouse, 934 East Main Road, Portsmouth, or Spring Pottery and Wellspring Books, 182 Bellevue Avenue, Newport.

Anita McAndrews



**Printing & Copying, Inc.**

176 Broadway  
Newport, RI 02840  
401-849-3820 • Fax (401) 849-3880

## Cook's Corner

Since I won the chicken contest I have been interested in developing new recipes for other contests. Here is one that I did for a Franco-American contest using their gravy. Haven't heard from them so I guess I didn't win. My next door neighbor, however, likes this one so much that she makes it once a week!

### MEXICALI SHEPHERD'S PIE

- 1 - 22 oz. package Ore-Ida Microwave Mashed Potatoes
- 1 pound ground beef
- 1/2 cup diced onion
- 2 Tbsp. Tio Sancho Taco Seasoning Mix
- 1 - 10 1/2 oz. can Franco-American Beef Gravy
- 2 - 11 oz. cans Green Giant Mexicorn
- 1 cup Sargento Preferred Light Shredded Natural Cheese for Tacos

Prepare mashed potatoes according to instructions. While potatoes are cooking place ground beef, onions and taco seasoning in heavy frying pan and stir fry until beef is brown. Spread in an 8-inch x 13-inch microwave proof baking dish. Spread gravy over meat mixture. Cover with drained canned mexicorn. Fold shredded cheese into hot mashed potatoes and spread over corn. Cook covered in microwave on high for 8 minutes, rotating dish one half turn at 4 minutes.

Makes 8 servings.

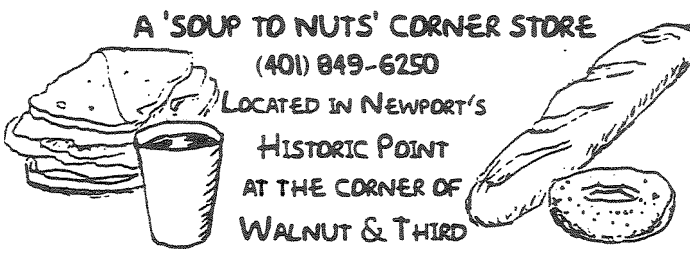
You can use regular mashed potatoes. The reason I used the frozen was because the contest rules specified the time to make the recipe had to be 30 minutes or less.

\* \* \* \* \*

## THE WALNUT MARKET

A 'SOUP TO NUTS' CORNER STORE  
(401) 849-6250

LOCATED IN NEWPORT'S  
HISTORIC POINT  
AT THE CORNER OF  
WALNUT & THIRD



This is the time of year when we do an unusual amount of entertaining and are looking for easy but delicious recipes for parties. At the same time we pledge not to overindulge and pack on those pounds over the holidays! This recipe from *Cooking Light* magazine fits the bill.

### SARDINE PATE APPETIZERS

- 2 - (3 3/4) oz. cans sardines in water, drained
- 1/4 cup finely chopped green onions
- 1 1/2 tsp. prepared horseradish
- 1 tsp. dried dillweed
- 1/4 cup plain nonfat yogurt
- 1 Tbsp. lemon juice
- 30 pieces melba toast
- 1/3 cup finely shredded carrot

Place the sardines in a bowl; mash with a fork. Add the next 5 ingredients and stir well. Cover and chill for at least 2 hours. To serve, spoon 2 tsp. pate onto each melba toast; top with about 1/2 tsp. carrot.

Makes 30 appetizers with 30 calories each.

\* \* \* \* \*

This will be my last Cook's Corner as I am retiring from working on the *Green Light*. I have a contract to do a second book about the Occupied Japan collectibles as well as some other projects I would like to start and feel that I need to scale back on some of my activities. As I grow older, my energy seems to diminish!


It's been a lot of fun . . . especially since I like to cook so much. I have had a good time scouting for recipes that I hope interested you. Thank you for all the wonderful feedback I have received. I was especially fond of the couple who, on returning from Florida, called me frantic for a copy of the Crock Pot Rice Pudding recipe they had forgotten to bring north with them!

Happy cooking!

Florence Archambault

T-SHIRTS PRINTED IN A DAY PRINTS FOR CLUBS, SCOUT TROOPS, FAMILY AFFAIRS, BIRTHDAYS, AND MANY MORE EVENTS. T-SHIRTS PRINTED IN A DAY PRINTS ON CAPS, SHIRTS

WE EVEN PUT PHOTOS ON SHIRTS & CAPS T-SHIRTS PRINTED IN A DAY WILL PRINT AS LITTLE AS ONE SHIRT OR AS MANY AS YOU WANT



## -SHIRTS PRINTED IN A DAY

65 Dr. MARCUS WHEATLAND Blvd.  
NEWPORT 401-846-0294

**Point Association of Newport  
Budget for 1995-96**

**Revenue**

**Events**

Plant Sale	1,200
Harbor Tour and Silent Auction	1,600
Wine Tasting	2,200
White Horse Tavern - Ghost Stories	600
New Event	

**Programs**

Legal Expense	
Pot Luck Supper	
Membership Cocktail Party	
April Meeting	
October Meeting	
History and Archives	
Caroling	

Membership	4,000
Administration	
Green Light	2,000
Interest	400
Beautification	

**Total Revenue** \$12,000

**Disbursements**

**Events**

Plant Sale	200
Harbor Tour and Silent Auction	600
Wine Tasting	600
White Horse Tavern - Ghost Stories	500
New Event	

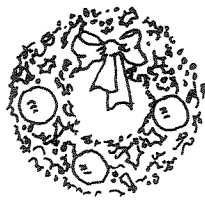
**Programs**

Legal Expense	
Pot Luck Supper	250
Membership Cocktail Party	250
April Meeting	400
October Meeting	150
History and Archives	300
Caroling	50

Membership	600
Administration	1,100
Green Light and Mailings	4,000
Interest	
Beautification	3,000

**Total Disbursements** \$12,000

\* \* \* \* \*



*Happy Holidays!*  
*from the Staff the Green Light*

**MEMBERSHIP FORM**

Name \_\_\_\_\_ Phone \_\_\_\_\_

Address \_\_\_\_\_

New Member \_\_\_\_\_ Renewal \_\_\_\_\_

I would like to be active in the following areas:

Activities & Programs \_\_\_\_\_ Beautification \_\_\_\_\_ Fundraising Events \_\_\_\_\_  
*Green Light* Staff \_\_\_\_\_ History & Archives \_\_\_\_\_ Membership \_\_\_\_\_  
 Phone Committee \_\_\_\_\_ Plant Sale \_\_\_\_\_ Potluck Supper \_\_\_\_\_ Publicity \_\_\_\_\_

**Dues:** Please make checks payable to The Point Association

Individual	\$7.00	Sustaining	\$15.00
Family	\$10.00	Patron	\$25.00

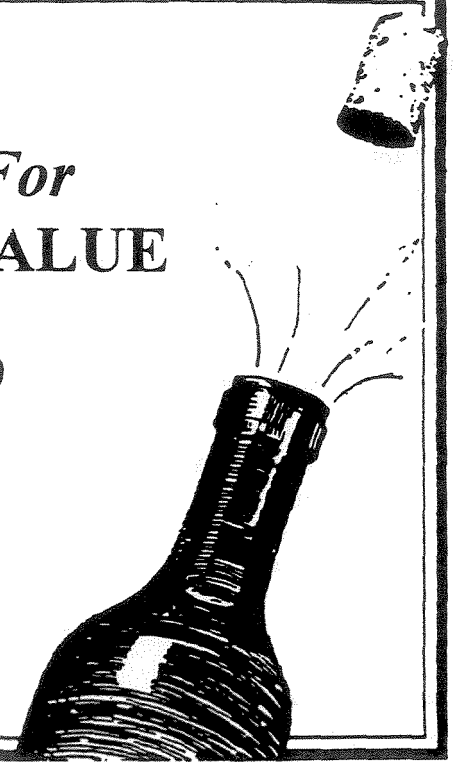
*Membership year runs from October 1 through September 30*  
**Mail to : The Point Association, P.O. Box 491, Newport, RI 02840**

*People Shop Aidinoff's For*  
**QUALITY-SERVICE & VALUE**

For Free Delivery Call 846-7000

*Aidinoff's*  
*Wine & Spirits*

16 Warner St. Newport, R.I.



**THE GREEN LIGHT**  
**THE POINT ASSOCIATION**  
Editor: P.O. Box 491  
Newport, RI 02840

Bulk Rate  
U.S. Postage  
**PAID**  
Newport, RI  
Permit No. 36

